

Download 3D models from websites

thingiverse.com
myminifactory.com
pinshape.com

Create your own 3D models

Try some of the free online tools

Autodesk TinkerCAD®
For beginners, online, free

Autodesk® Fusion 360
For intermediate users, free for students

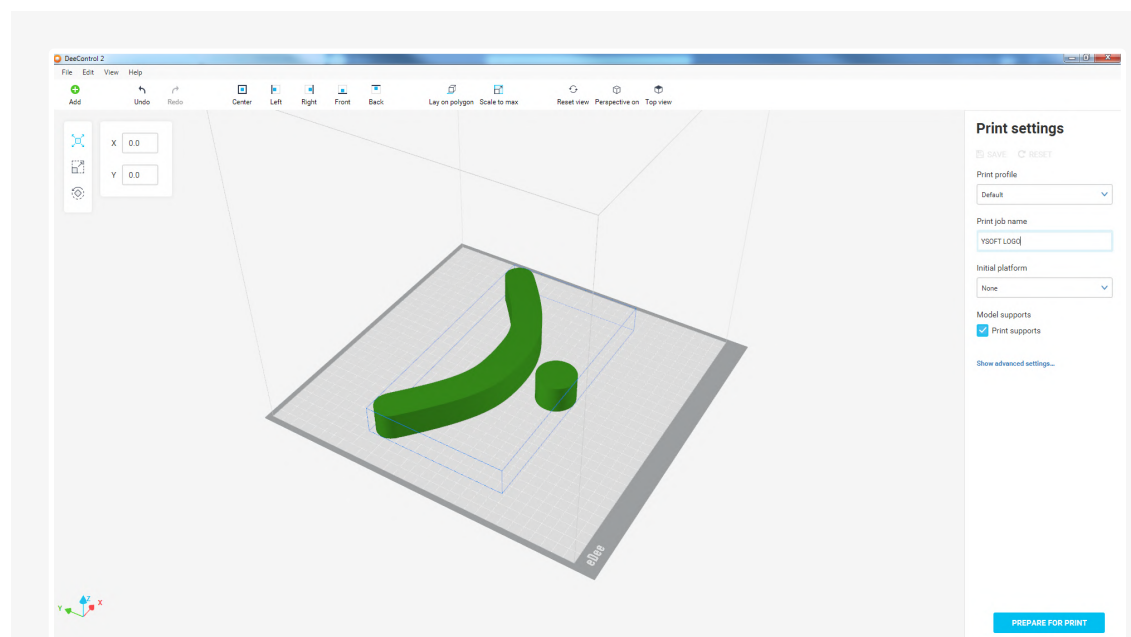
Get inspired

BE3D™
ACADEMY

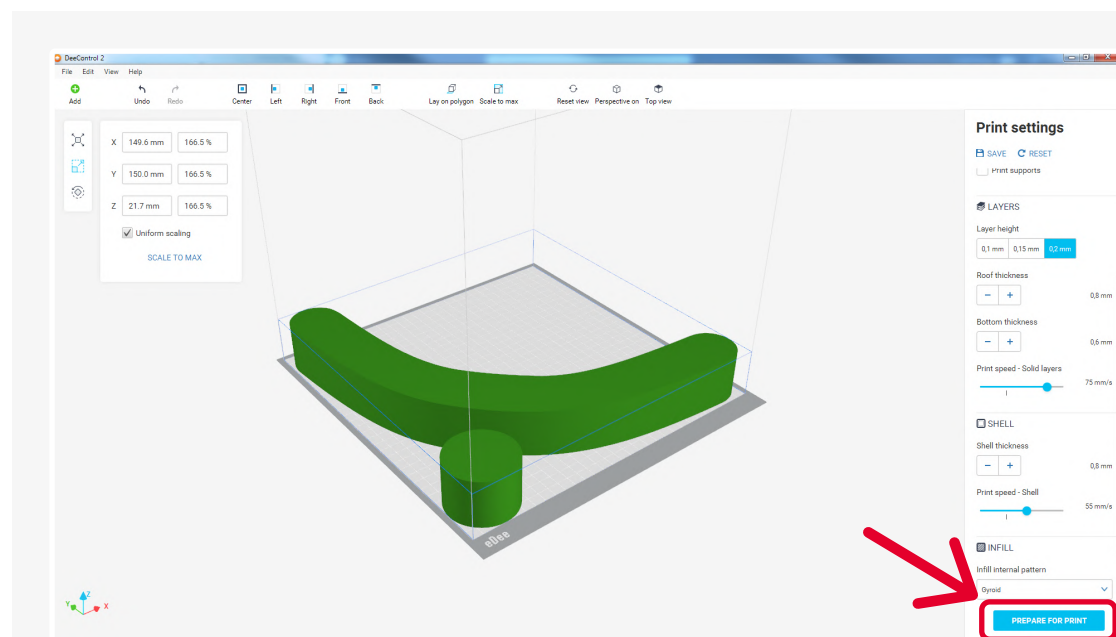
be3dacademy.ysoft.com

an online collection of 3D resources and lesson plans designed for educators

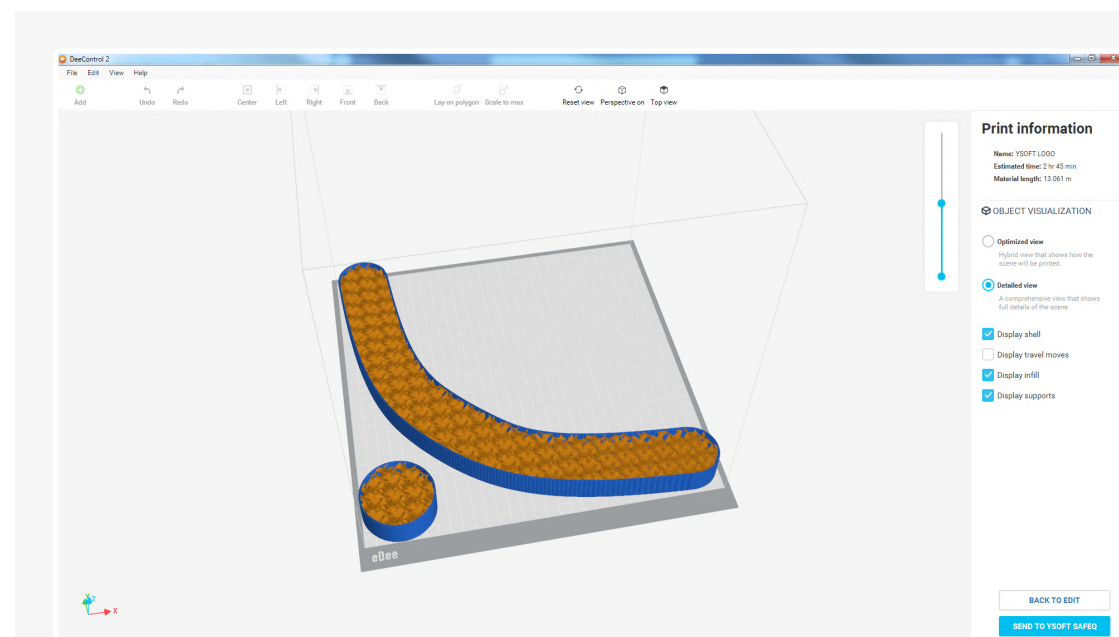
1 Open your 3D model in DeeControl and prepare it for 3D printing



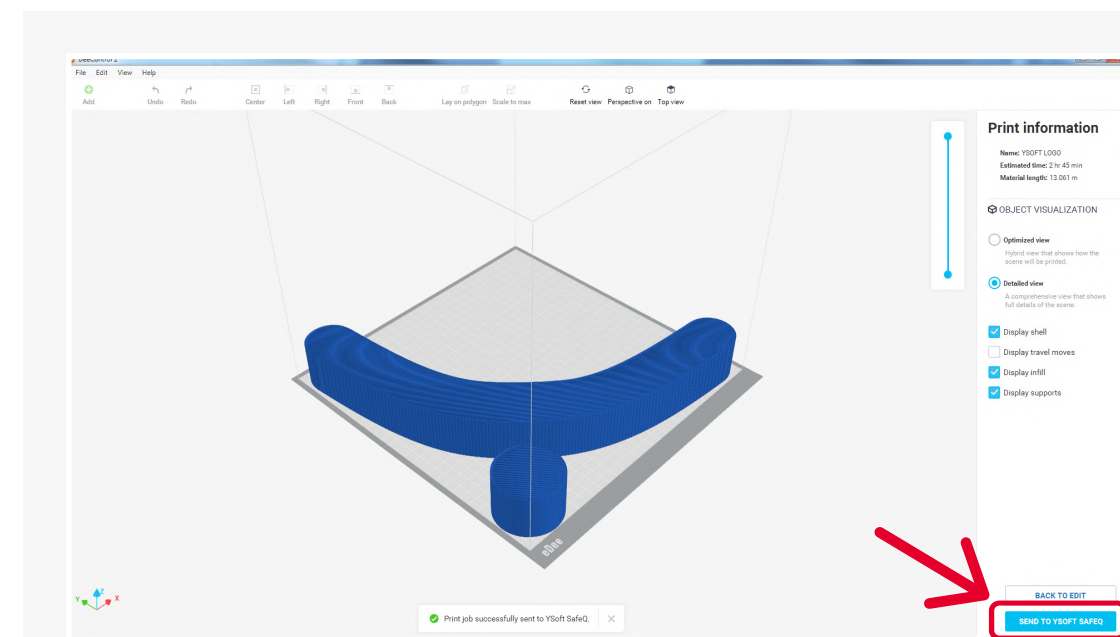
Place models on the print pad (drag and drop or Add).



Rotate, resize, or adjust print parameters. Click the "Prepare for print" button.

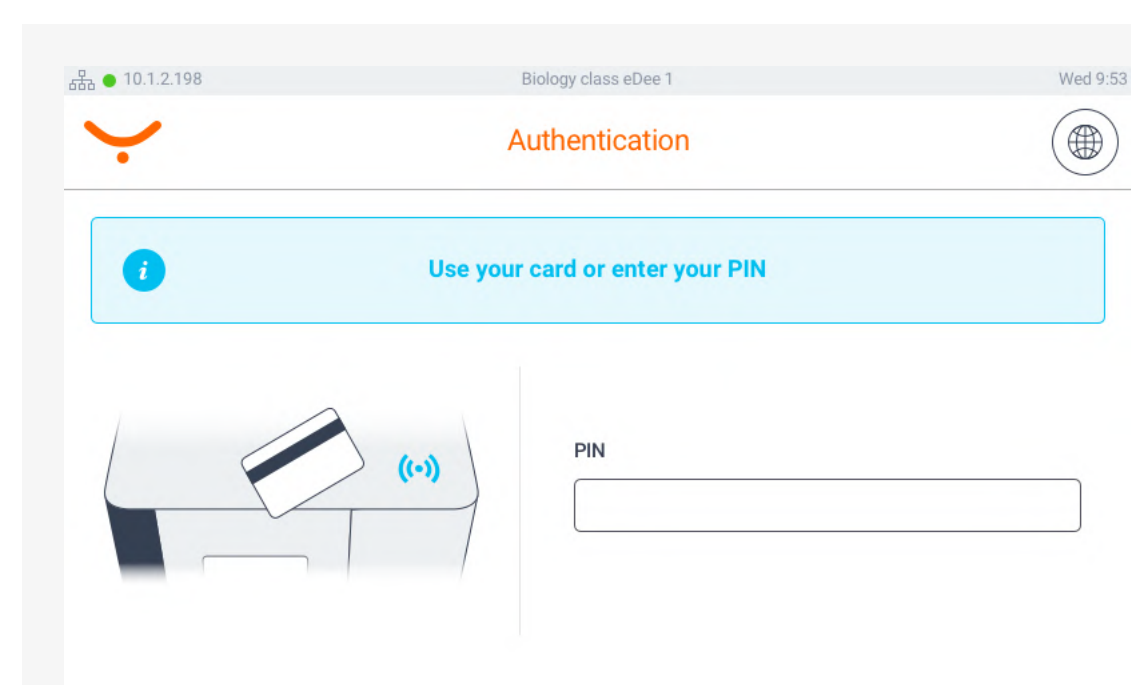


Check preview.

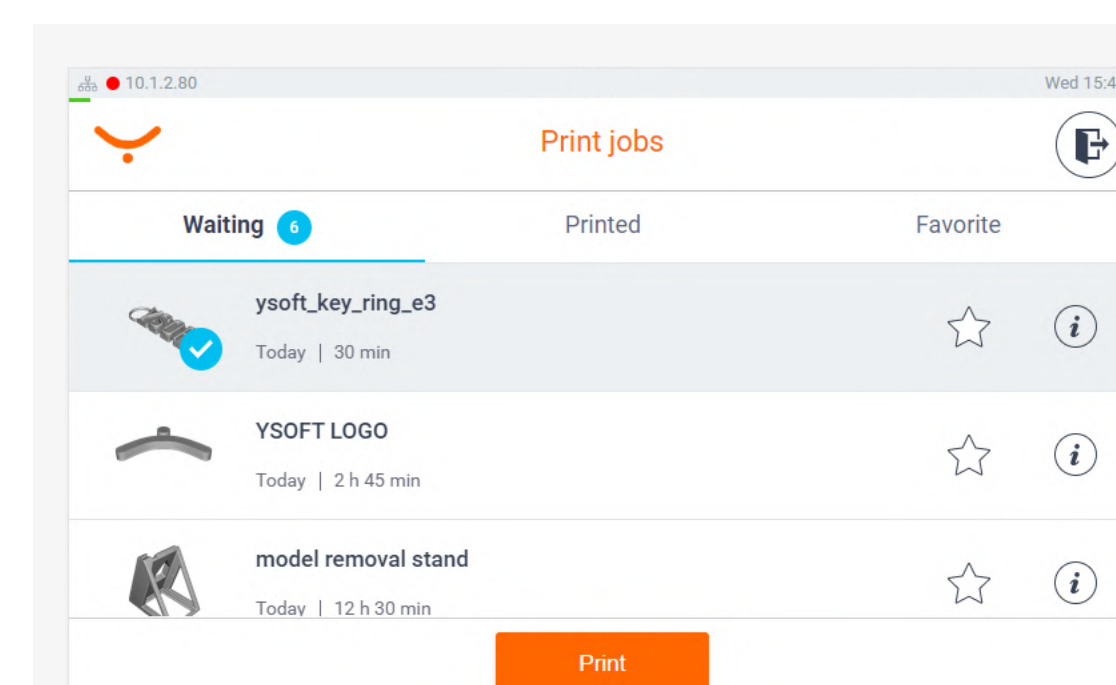


Send to YSoft SafeQ.

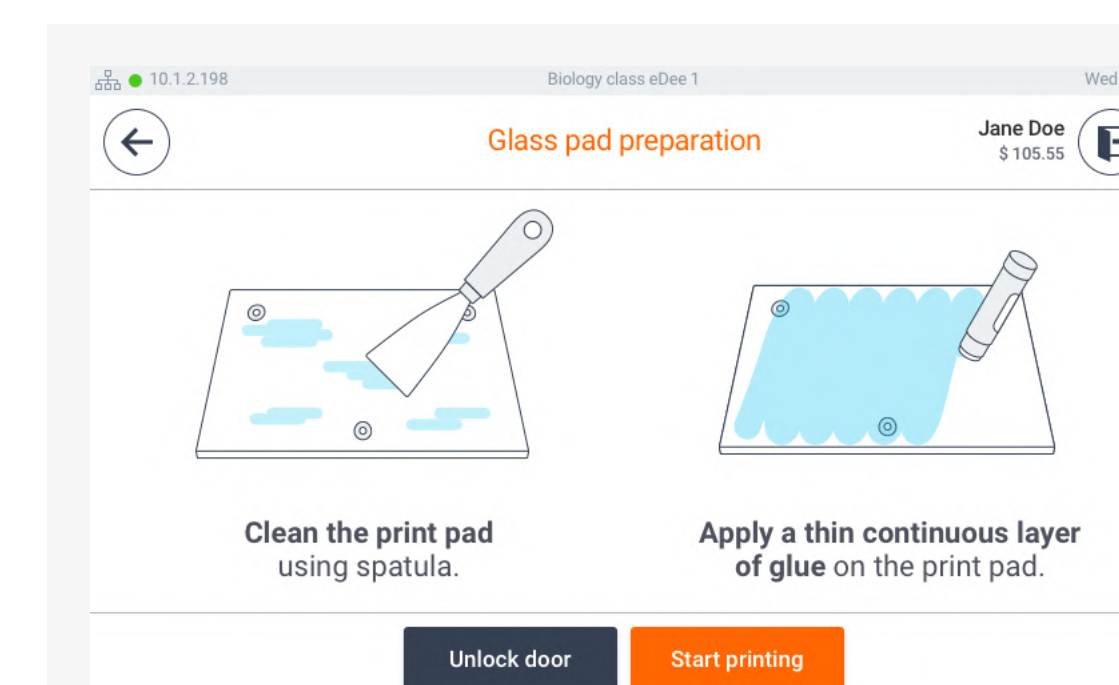
2 Print the model at any eDee printer



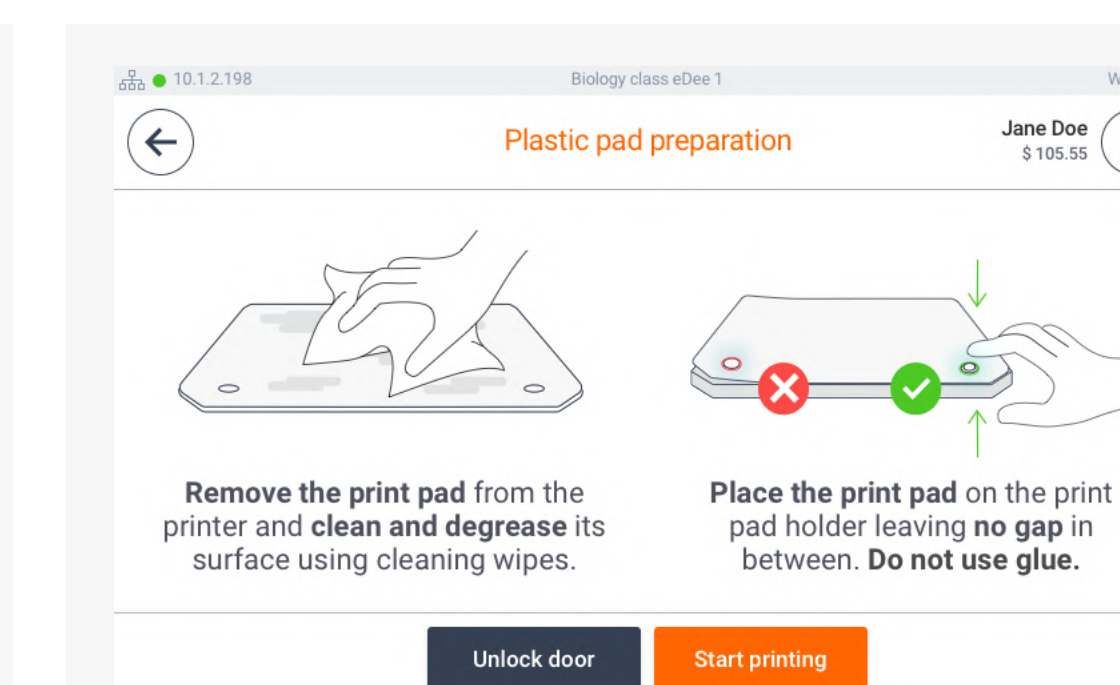
Authenticate to any available eDee printer with your ID card / PIN / username and password.



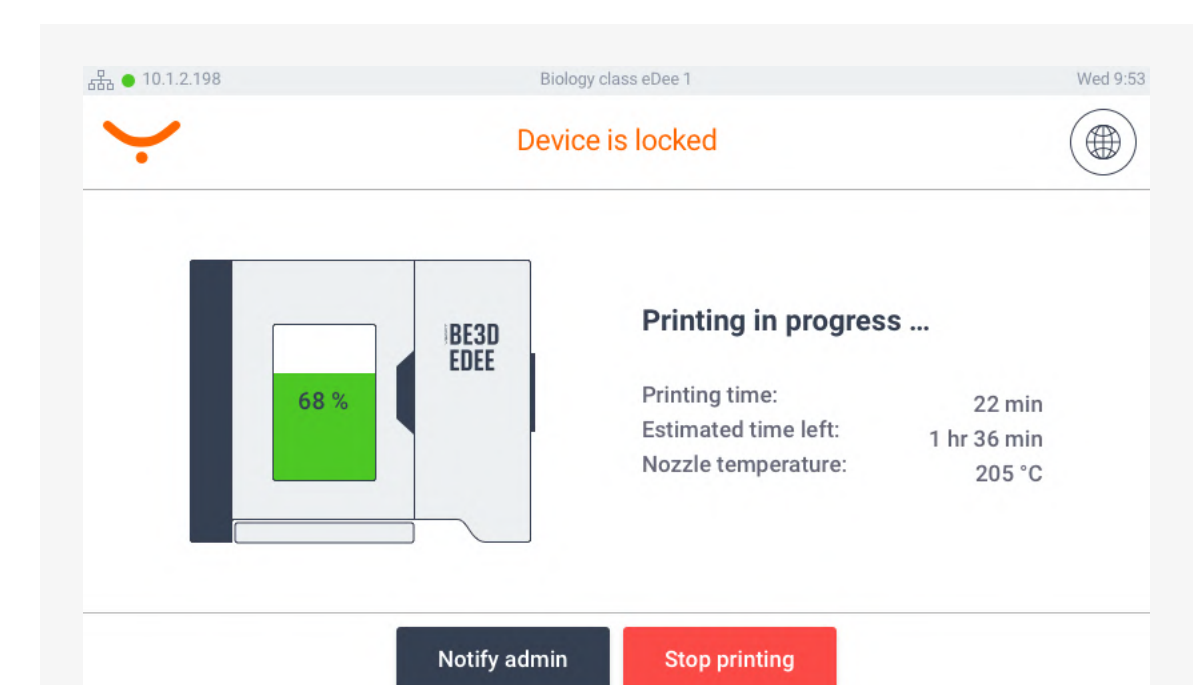
Select the model you want to print and tap on the Print button. You can check the estimated print time and additional information.



Glass print pad:
Use a spatula to clean the print pad, apply a thin layer of glue and put the print pad back in the printer.

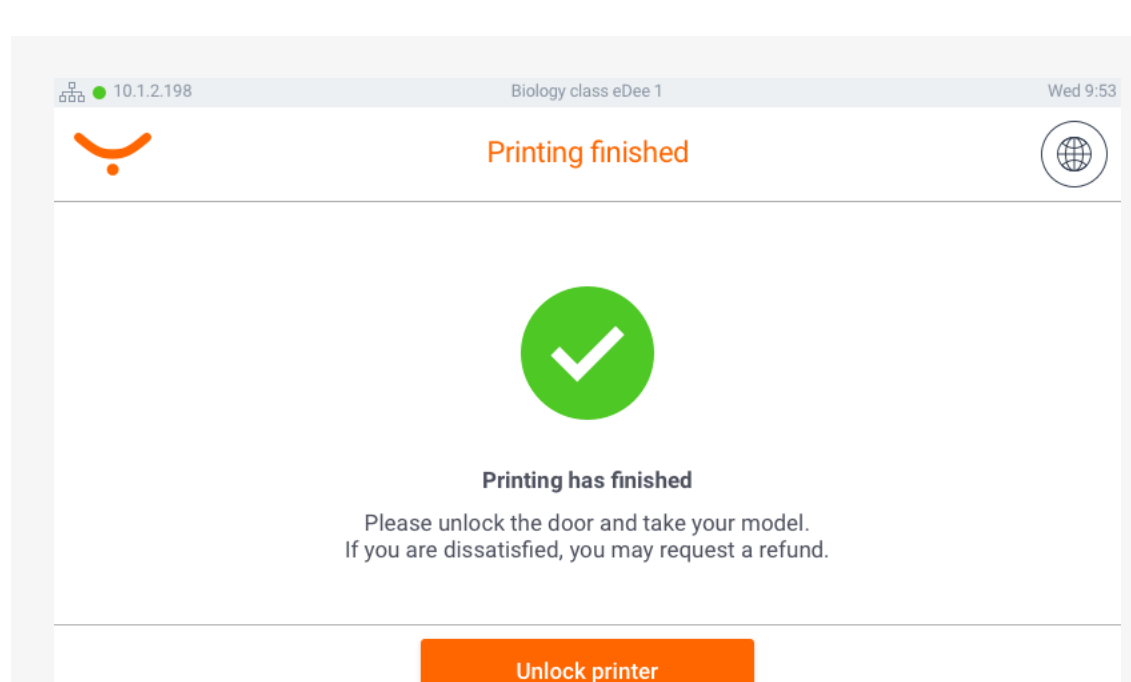


Plastic print pad:
Use the supplied wipe to clean the plastic print pad. Check that it is correctly placed in the printer (is not bent).

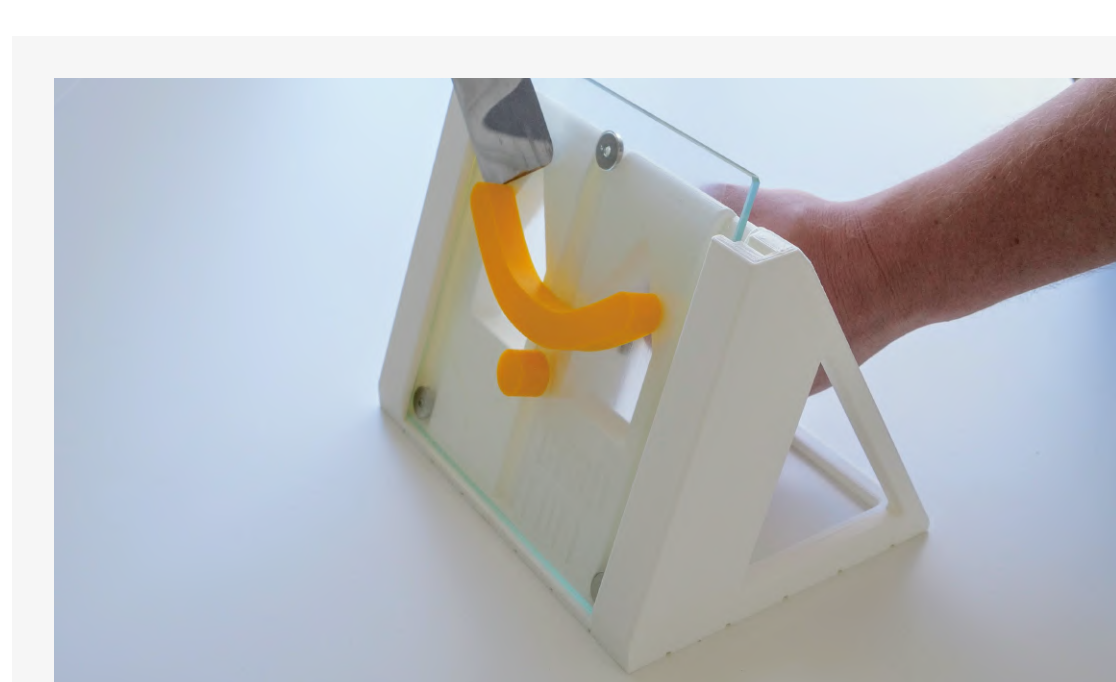


Close the door and tap on the Start printing button. Printing will start.

3 Collect the printed model from the eDee printer



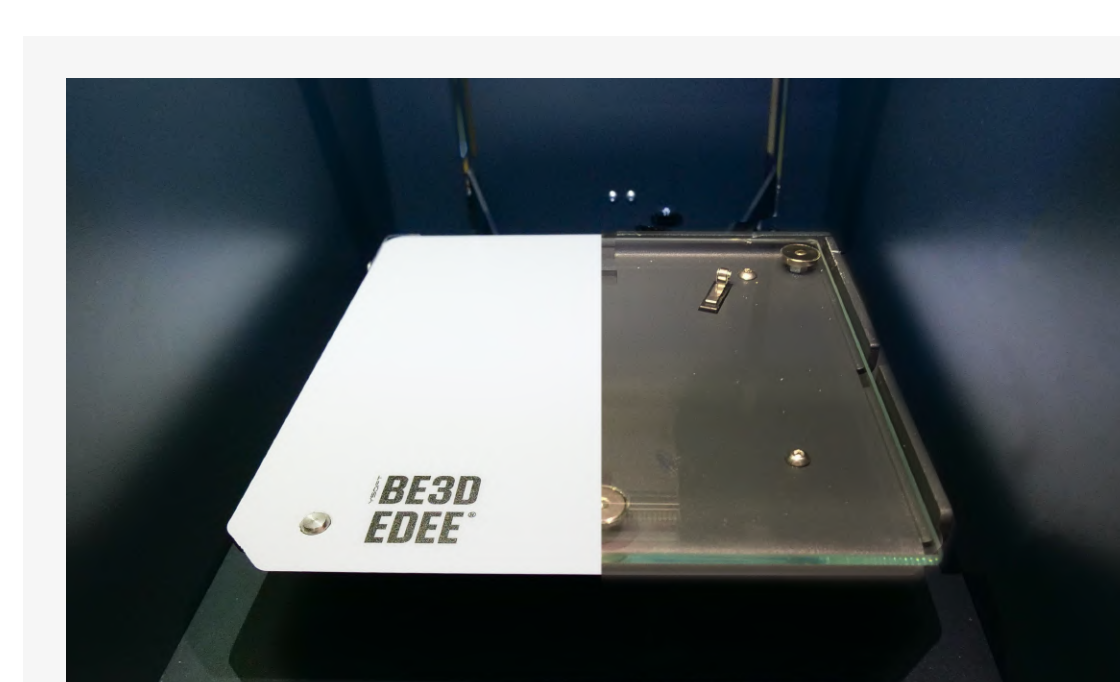
Once the printing has finished you will be notified via email. Authenticate at the eDee printer with your ID card / PIN / username and password.



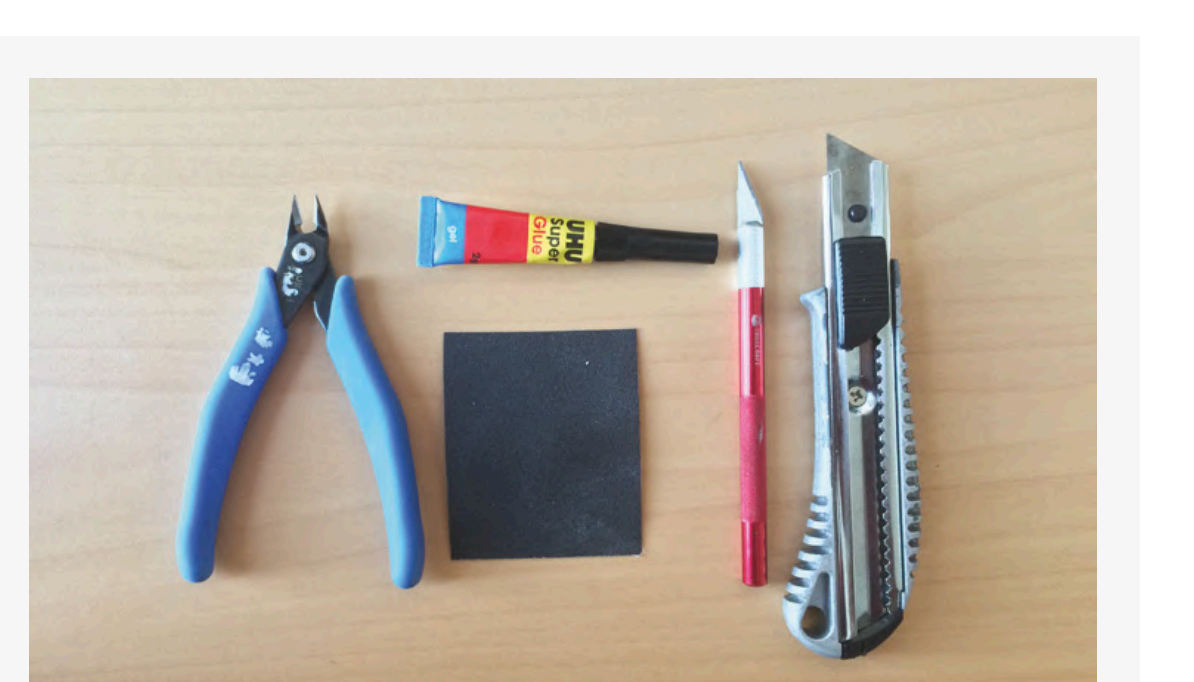
Glass print pad:
Take out the print pad and use the model removal stand and spatula to remove the model.



Plastic print pad:
Take out the print pad and flex the print pad to remove the model. In case the model is not released, use the model removal stand and spatula.

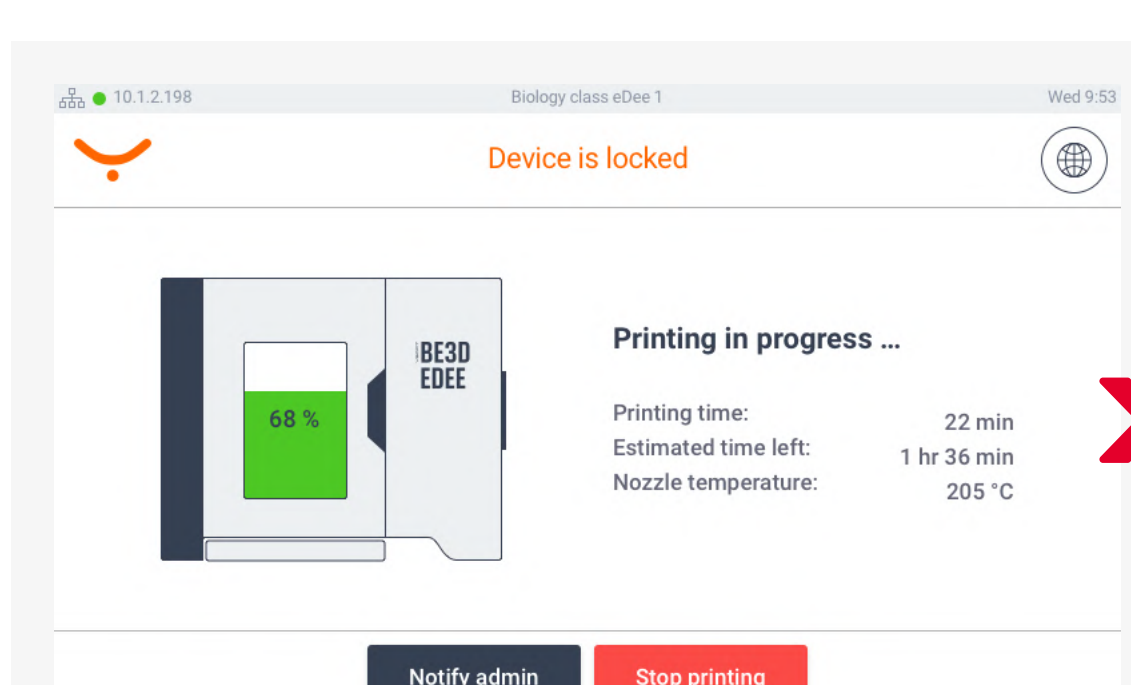


When you're done, clean the print pad, place it back into the printer and close the door.

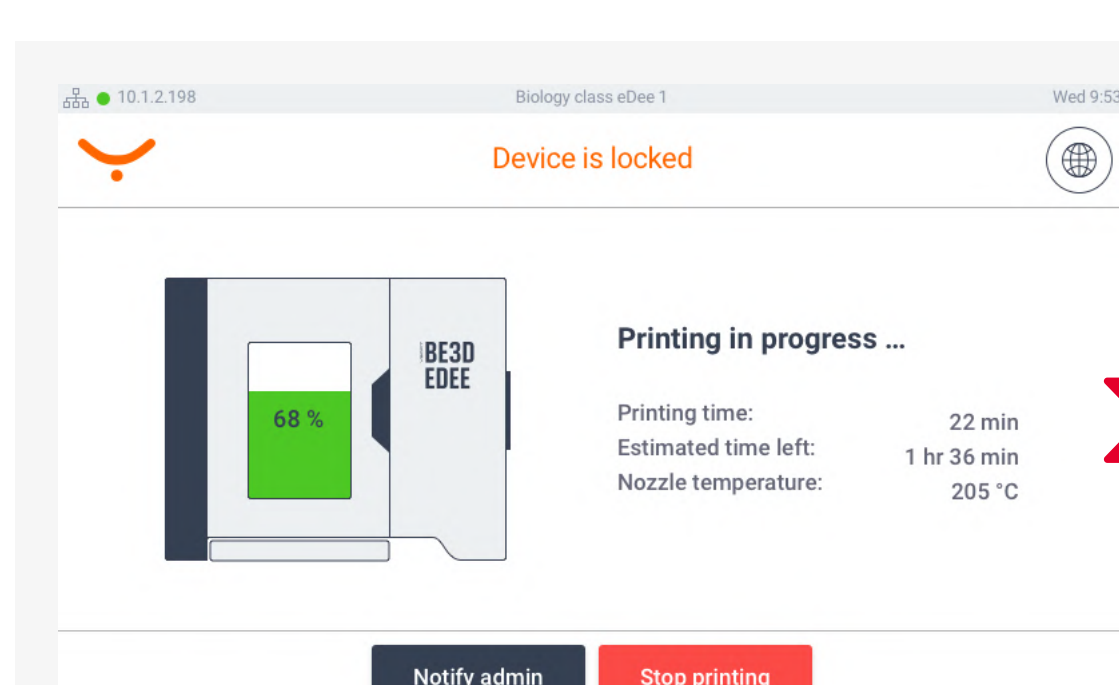
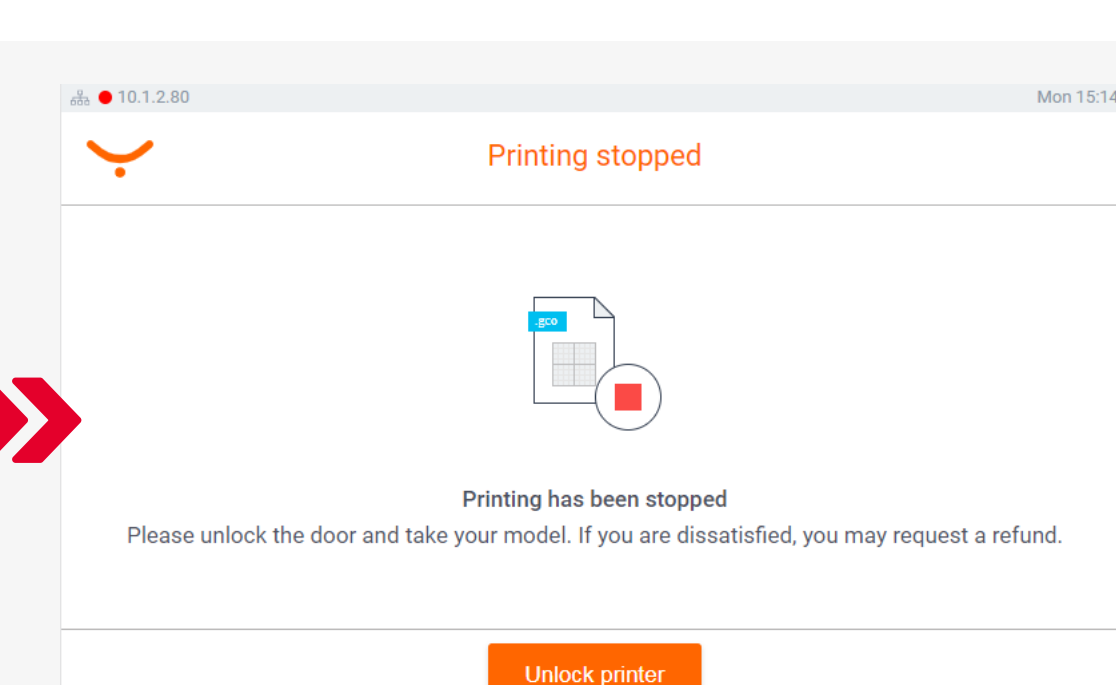


Use the finishing tools to make the most out of your model.

Having trouble?



The print job owner or the administrator can stop the printing. Tap on the "Stop printing" button and provide authentication.



Anyone can notify the administrator if an issue occurs. Tap on the "Notify admin" button, authenticate, select the issue from the list and tap on the "Select" button.

